

Education and Learning Directorate

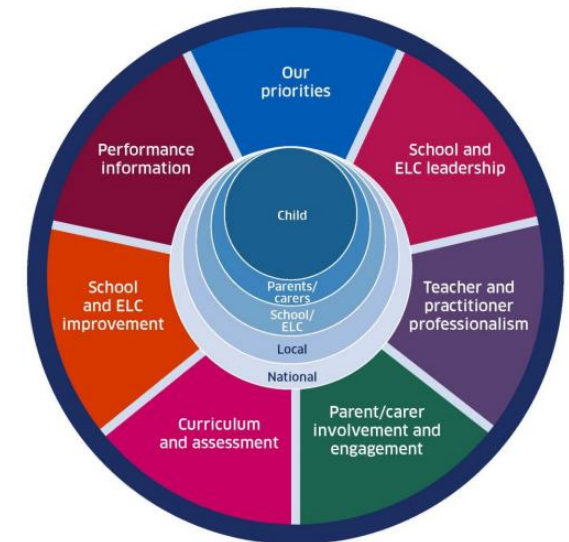
School/ELC Annual School Improvement Planning

2024-2025



**Wallace Hall Academy,
Primary & ELC**

"Together we grow, learn and achieve"



School: Wallace Hall ELC

Date: 31st May 2024

Contents

ELC Priority/Improvement Area 1	3
Self Evaluation & Planning	3
ELC Priority/Improvement Area 2	4
Developing the outdoor learning space	4
ELC Priority/Improvement Area 3	5
Developing Froebelian approaches - woodwork	5

SCHOOL IMPROVEMENT PLAN 2024 – 2025 *(Limit the number of priorities to ensure they are manageable and achievable.)*

ELC Priority/Improvement Area 1	Outcomes for Learners/School Community	Key Tasks	
Self Evaluation & Planning	<p>There will be a shared understanding that self-evaluation is an integral aspect of our approach to continuous improvement.</p> <p>Quality improvement and moderation activities are carried out effectively and efficiently, and to agreed standards and expectations.</p> <p>A wide range of local, national and international advice and research will be used to reflect on current practice, and evaluate any new initiatives, ideas and changes which have been introduced and provide evidence of impact.</p> <p>Planning will reflect quality improvement and reflection within the ELC, while still upholding 'planning in the moment'</p>	<ul style="list-style-type: none"> Evaluate monitoring calendar and edit it to better suit the needs of the setting. Use what was learned at training to involve staff more in the self-evaluation process Make more use of peer observations Incorporate the building capacities into self-evaluation Continue with planning format and evaluate effectiveness. Work with early level primary staff to plan a method of how to ensure themes are not duplicated when moving to primary 1. Update curriculum framework. Continue to use new spreadsheet for tracking attainment. 	
NIF Priority	NIF Driver	HGIOS?4 / HGIOELC QIs/National Standard Criteria	
Improvement in attainment, particularly in literacy and numeracy.	Teacher Professionalism School improvement Performance information	1.1, 1.2, 1.3, 1.5, 2.3	
Responsible/Lead Person	Time Allocations	Funding – including PEF	Expected Completion Date
Nursery Manager	Management time Weekly Staff meetings	Potential costs to enhance resources	July 2025
Parental and Learner Engagement Opportunities		Linkage to Framework for Inclusion	
<p>Seeking views from care givers, staff and children through big book contributions and MS Forms.</p> <p>Illustrating children's voice through planning evidence.</p> <p>Feedback opportunities at open events in the ELC, and daily conversations and meetings with families, children, staff and multiagency bodies.</p>		<p>Social Justice – Rights in education.</p> <p>Inclusion – Redefines the roles and responsibilities of professionals and the relationships between them.</p> <p>Legislation - GIRFEC, Curriculum for Excellence, Early Years Framework, UNCRC.</p> <p>Learning and Teaching issues – Increasing opportunities, identifying and removing barriers to learning and participation.</p>	

ELC Priority/Improvement Area 2	Outcomes for Learners/School Community	Key Tasks	
Developing the outdoor learning space	<p>Quality developments to the physical space will provide more learning opportunities within the provision.</p> <p>Equipment will be utilized in a more quality assured manner.</p> <p>Research from local and national guidance will ensure the space is developed in a way that ensures sustainability, durability and progressive practice.</p>	<ul style="list-style-type: none"> • Finish greenhouse • Create shade over mud kitchen and sand pit • Finish outdoor classroom conversion • Order new outdoor resources – use ECCERS scale and Out to Play document for guidance. • Finish new digging and construction areas. • Finish developing cosy space in garage • Self- evaluate with children and families for their voice in these developments. • Review mud kitchen provision. • Adapt woodwork area for needs of the children • Fully establish hand washing and water drinking stations. 	
NIF Priority	NIF Driver		HGIOS?4 / HGIOELC QIs/National Standard Criteria
Improvement in attainment, particularly in literacy and numeracy	<p>School Improvement</p> <p>Assessment of children's progress</p>		2.5, 2.7, 3.1, 3.3
Responsible/Lead Person	Time Allocations	Funding – including PEF	Expected Completion Date
Nursery Manager	<p>Planting according to seasons</p> <p>Time to plan within staff meetings</p>	Supplies for garden & potential new resources	July 2025
Parental and Learner Engagement Opportunities		Linkage to Framework for Inclusion	
<p>Annual gardening open afternoon, as well as other open events throughout the year.</p> <p>Child's voice and views through planning of areas.</p> <p>Child's contributions to developing outdoor space.</p>		<p>Social Justice – Right to education.</p> <p>Inclusion – recognize relationships underpin effective learning and teaching.</p> <p>Legislation – GIRFEC, Curriculum for Excellence, The Early Years Framework, UNCRC</p> <p>Learning and Teaching – promoting learning of literacy, numeracy and wellbeing across the curriculum.</p>	

ELC Priority/Improvement Area 3	Outcomes for Learners/School Community		Key Tasks	
Developing Froebelian approaches - Woodwork	<p>Broader range of learning opportunities in the ELC provision.</p> <p>Staff/school community will feel more confident in delivering Froebelian approaches.</p> <p>Providing a more diverse platform for opportunities to involve parents/caregivers and the wider community.</p>		<ul style="list-style-type: none"> • Remaining staff to take part in training • Staff to visit ELCs with working woodwork areas. • Start woodwork initial introduction with new children. • Created a sustainable plan for offering woodwork and incorporate in curriculum rationale. • Invite families in to experience the woodwork area in action. 	
NIF Priority	NIF Driver		HGIOS?4 / HGIOELC QIs/National Standard Criteria	
Improvement in attainment, particularly in literacy and numeracy	<p>School leadership</p> <p>School improvement</p> <p>Performance information</p>		2.2, 2.3, 2.4, 3.3	
Responsible/Lead Person	Time Allocations	Funding – including PEF	Expected Completion Date	
Nursery Manager	Time allocated for NNE and NNW to plan, implement and evaluate programme	<p>Initial startup cost – already started from 22/23 budget</p> <p>Cost to replenish supplies</p>	Completion of programme to be used in future years – Fully established and working within ELC December 2024.	
Parental and Learner Engagement Opportunities		Linkage to Framework for Inclusion		
<p>Open event for caregivers to discuss new programmer within the ELC.</p> <p>Children part of the planning and implementation.</p> <p>Host an open event for parents and families to come and experience woodwork in the ELC.</p>		<p>Social Justice – Right to education</p> <p>Inclusion – Involves participation in school and classroom communities, a common curriculum, systems of assessment, and social and extra-curricular activities.</p> <p>Legislation - GIRFEC, Curriculum for Excellence, The Early Years Framework, UNCRC</p> <p>Learning and teaching – Increasing opportunities, identifying and removing barriers to learning and participation.</p>		

